

# Bristol

2-UP Series



Total Sq.Ft Under Roof - 3,686

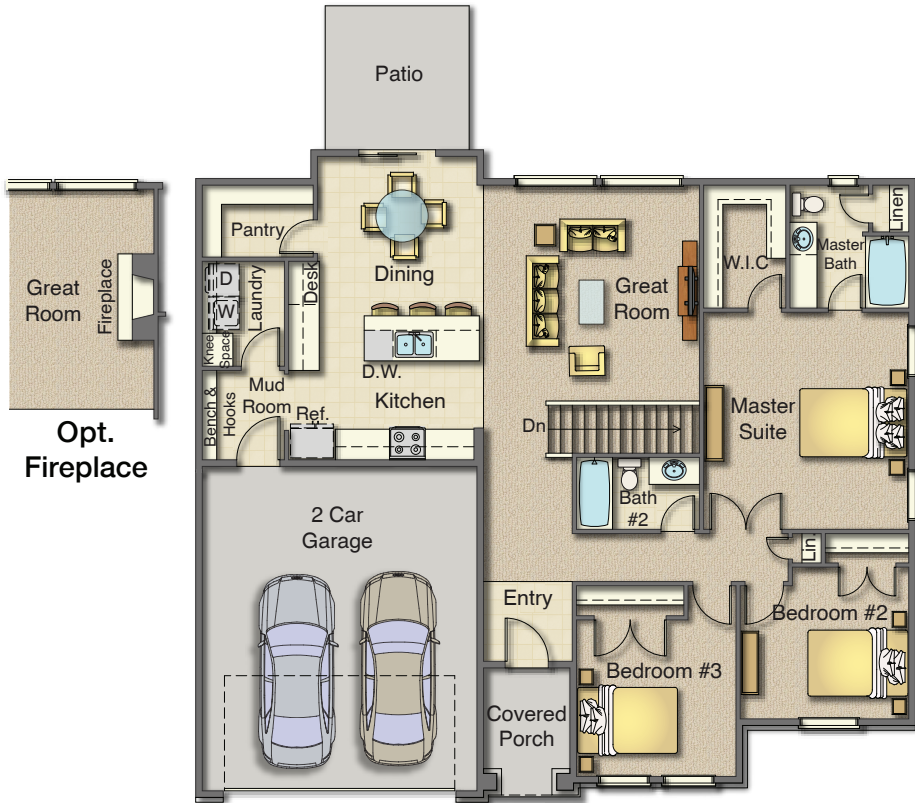
Are You Moving ?



Craftsman Elevation

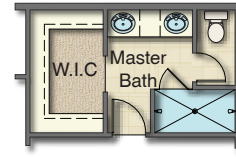


Cotswold Elevation

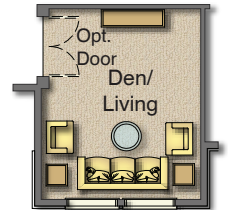


**Cotswold Floor Plan**

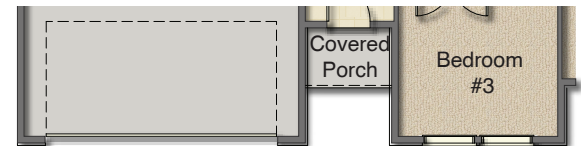
Main - 1,594 Sq.Ft.  
Garage - 454 Sq.Ft.  
Covered Porch - 53 Sq.Ft.



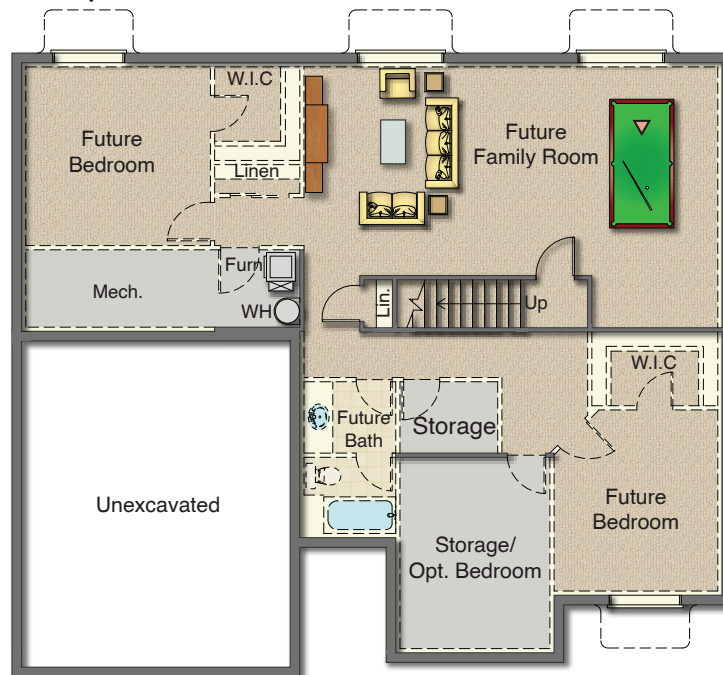
**Master Bath Options**



**Opt. Den At Bedroom #3**



**Craftsman Front Porch**



**Basement**  
1,585 Sq.Ft.