

PIEDMONT & ETRUSCAN



Piedmont

This three-bedroom, two-and-a-half bath plan with optional wrought-iron balconies features a two-story Great Room that can be converted to include a second-floor gallery, entertainment room or fourth bedroom.

- 3 Bedrooms
- 2.5 Bathrooms
- Optional Balconies
- Gallery/Recreation / 4th Bedroom Option

1641 total sq. ft.

Etruscan

This three-bedroom, two-and-a-half bath plan features a main level Master Suite, gorgeous Gourmet Kitchen and a large Loft overlooking the main level living area.

- 3 Bedrooms
- 2.5 Bathrooms
- Main Level Master
- Covered Patio
- Loft

1755 total sq. ft.

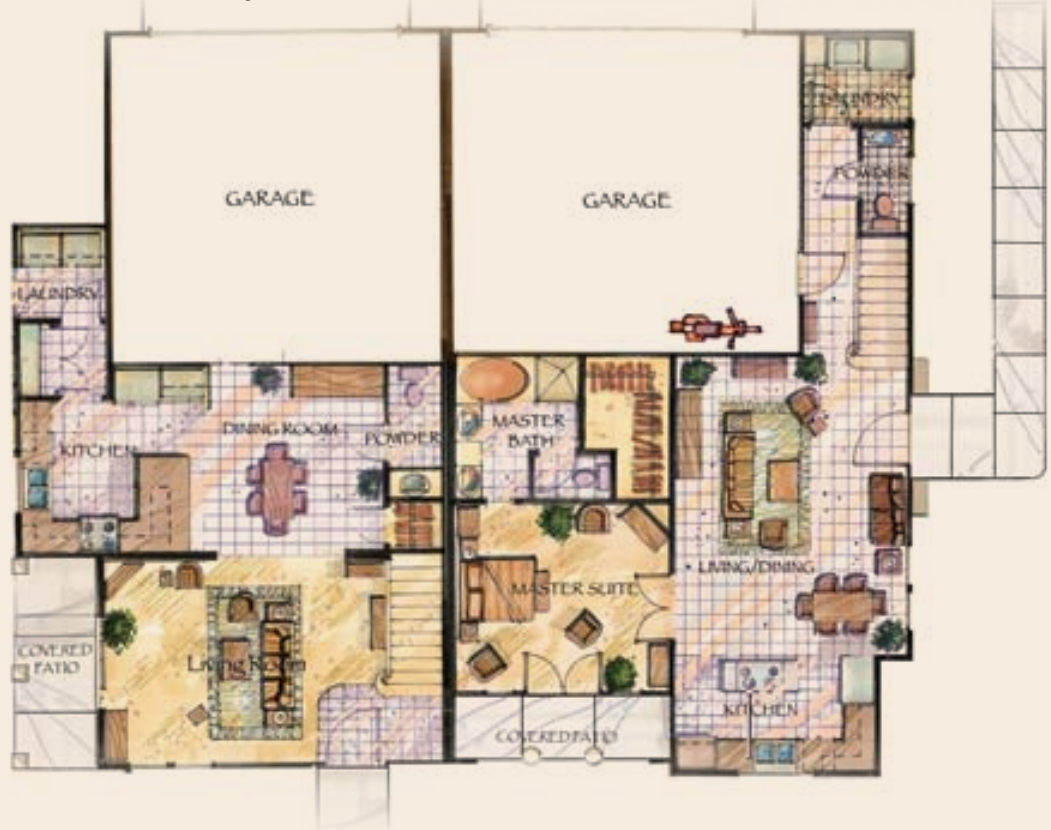


www.tuscanhillsstgeorge.com
1163 W. Province Way • St. George, UT 84770



Main floor and upper floor plans on reverse side.

Piedmont & Etruscan | FLOOR PLANS



Piedmont Main Level Floor Plan ▲ | Etruscan Main Level Floor Plan ▲



Piedmont Upper Level Floor Plan ▲ | Etruscan Upper Level Floor Plan ▲

Pictures shown are artist's rendering. Actual floor plans and features many vary.