

Weston

2-UP Series



Total Sq.Ft Under Roof - 3,375

Are You Moving ?

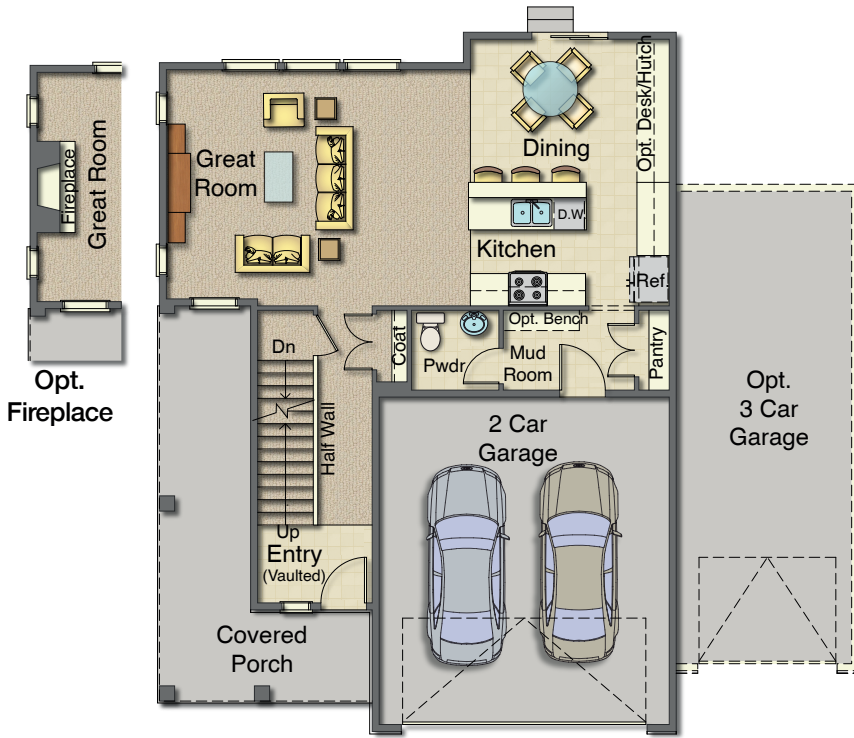


Craftsman Elevation

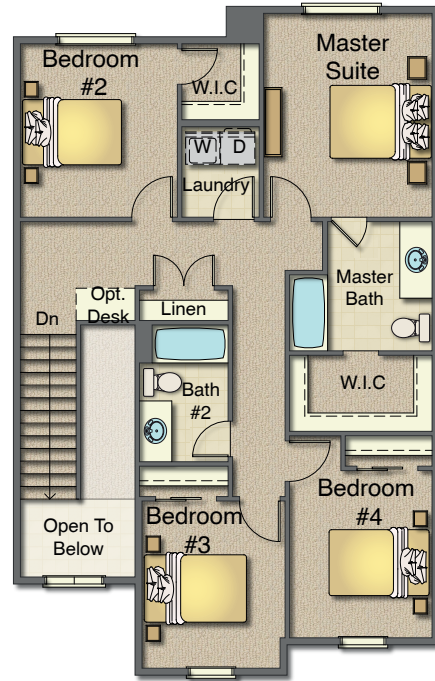


Cotswold Elevation

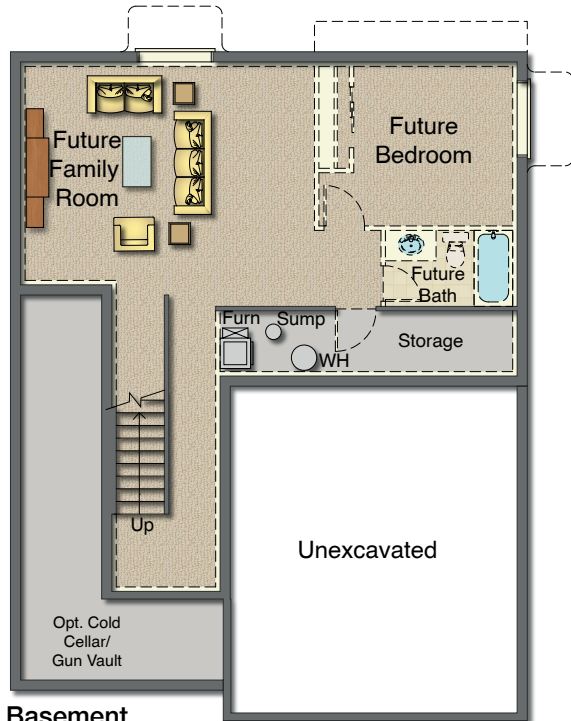
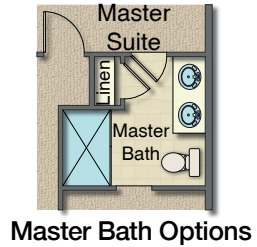




Main - 858 Sq.Ft.
 Garage - 434 Sq.Ft.
 Covered Porch - 204 Sq.Ft.



Second - 1048 Sq.Ft.



Basement
 831 Sq.Ft.