

Lakewood

Total Sq.Ft Under Roof - 4,412



CRAFTSMAN ELEVATION

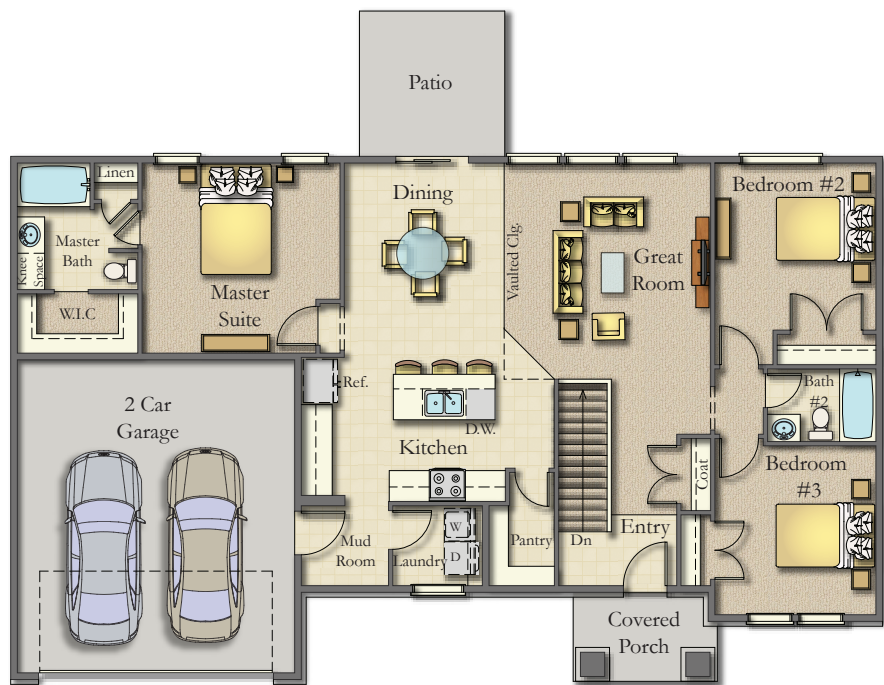


COTSWOLD ELEVATION

IMMACULATE EXTERIORS • INVITING KITCHENS • INCREDIBLE ENERGY SAVINGS

Lakewood

Total Sq.Ft Under Roof - 4,412



Cotswold Floor Plan

- Main - 1,511 Sq.Ft.
- Garage - 433 Sq.Ft.
- Covered Porch - 57 Sq.Ft.

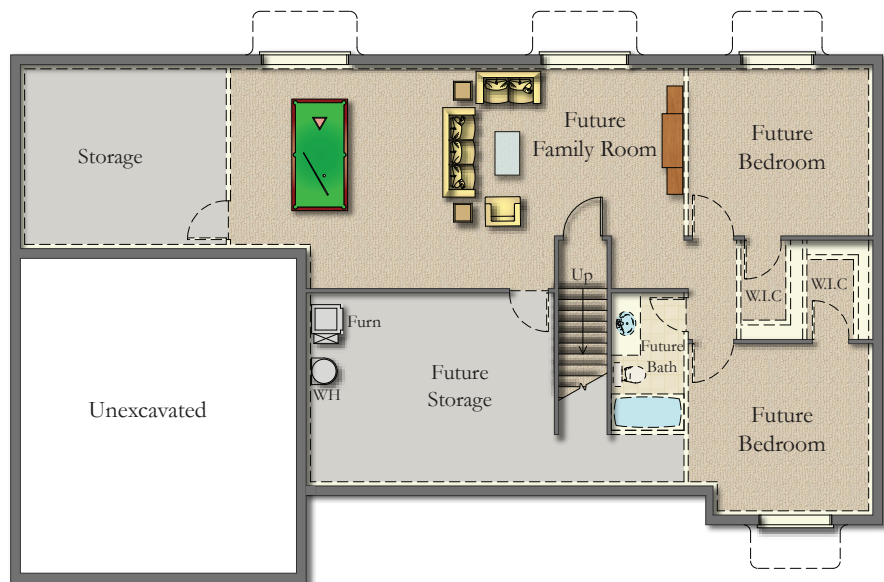


Opt. Fireplace

Master Bath Options

Opt. Den At Bedroom #3

Craftsman Front Porch



Basement
1,511 Sq.Ft.

IMMACULATE EXTERIORS • INVITING KITCHENS • INCREDIBLE ENERGY SAVINGS